



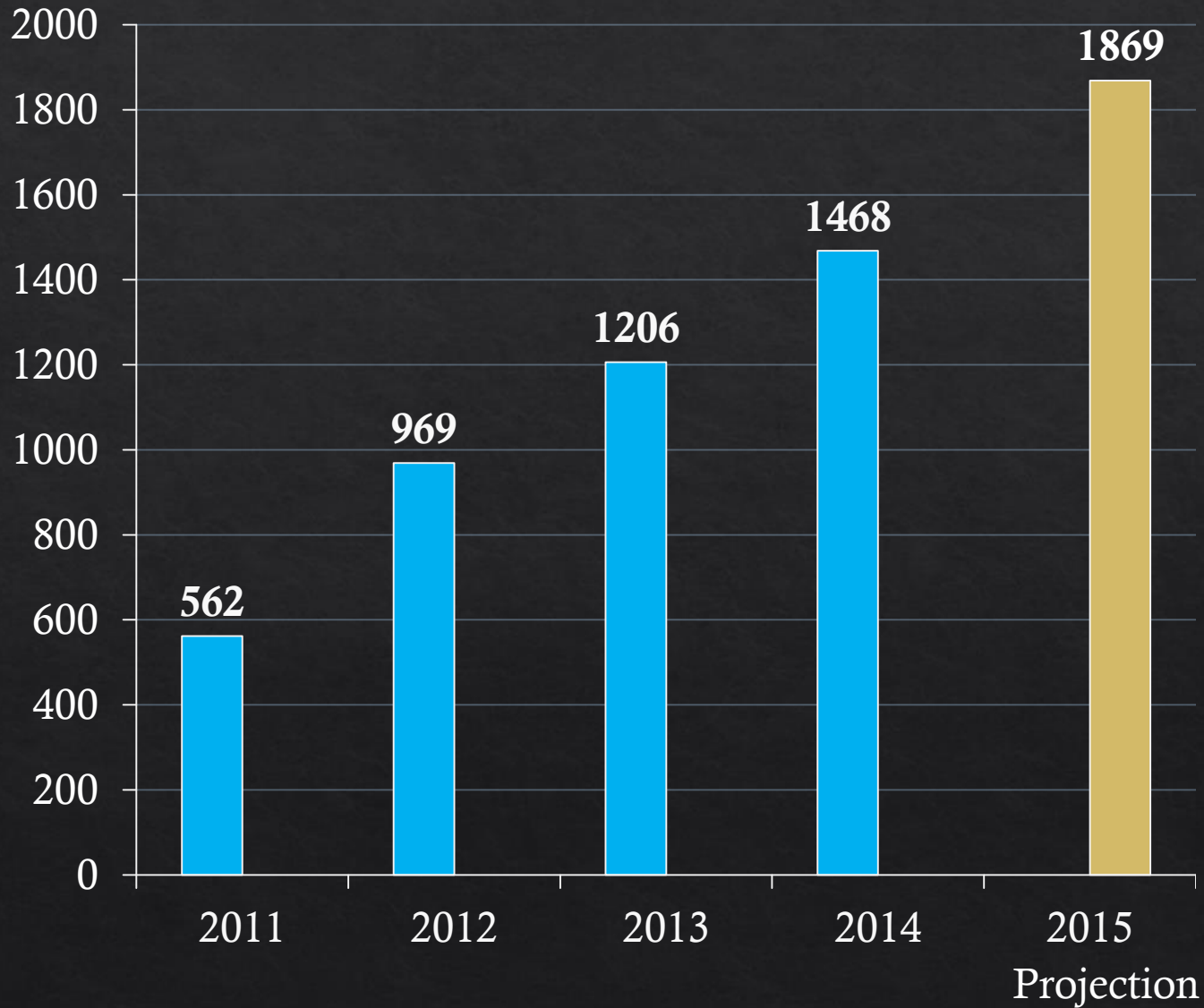
Crisis Care Center

Fourth Year Report

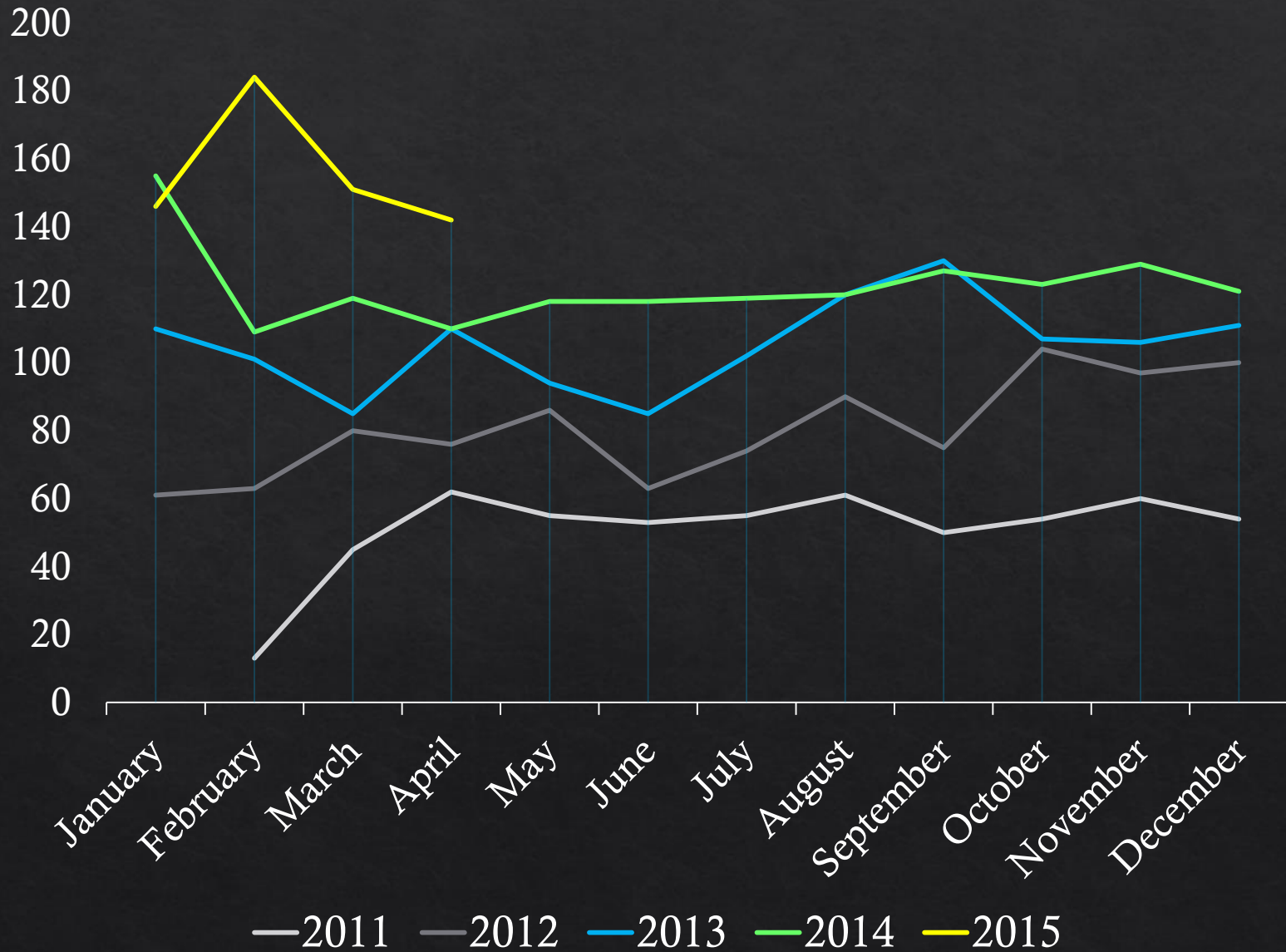
Original Goals

- ◇ Provide the community with crisis options other than inpatient psychiatric care, incarceration, and involuntary admission to detox services to match level of need to level of care
- ◇ Improve access to after crisis follow-up and mental health and substance abuse treatment
- ◇ Improve service integration and coordination among agencies and providers to help individuals better navigate complex systems
- ◇ Improve awareness about and access to services to assist people in entering the health care system for mental health and substance abuse services prior to entering a crisis state

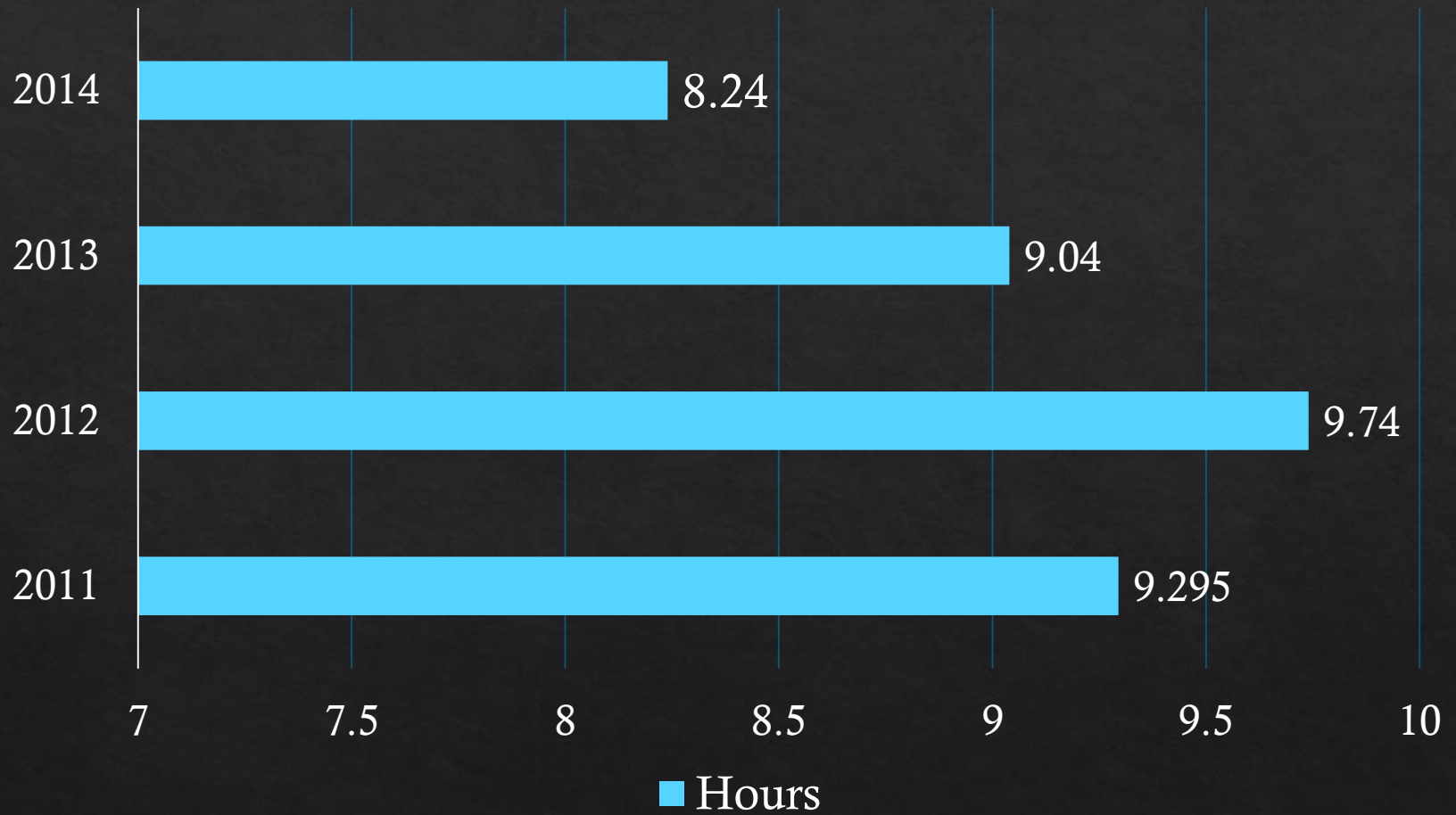
Admissions by Year



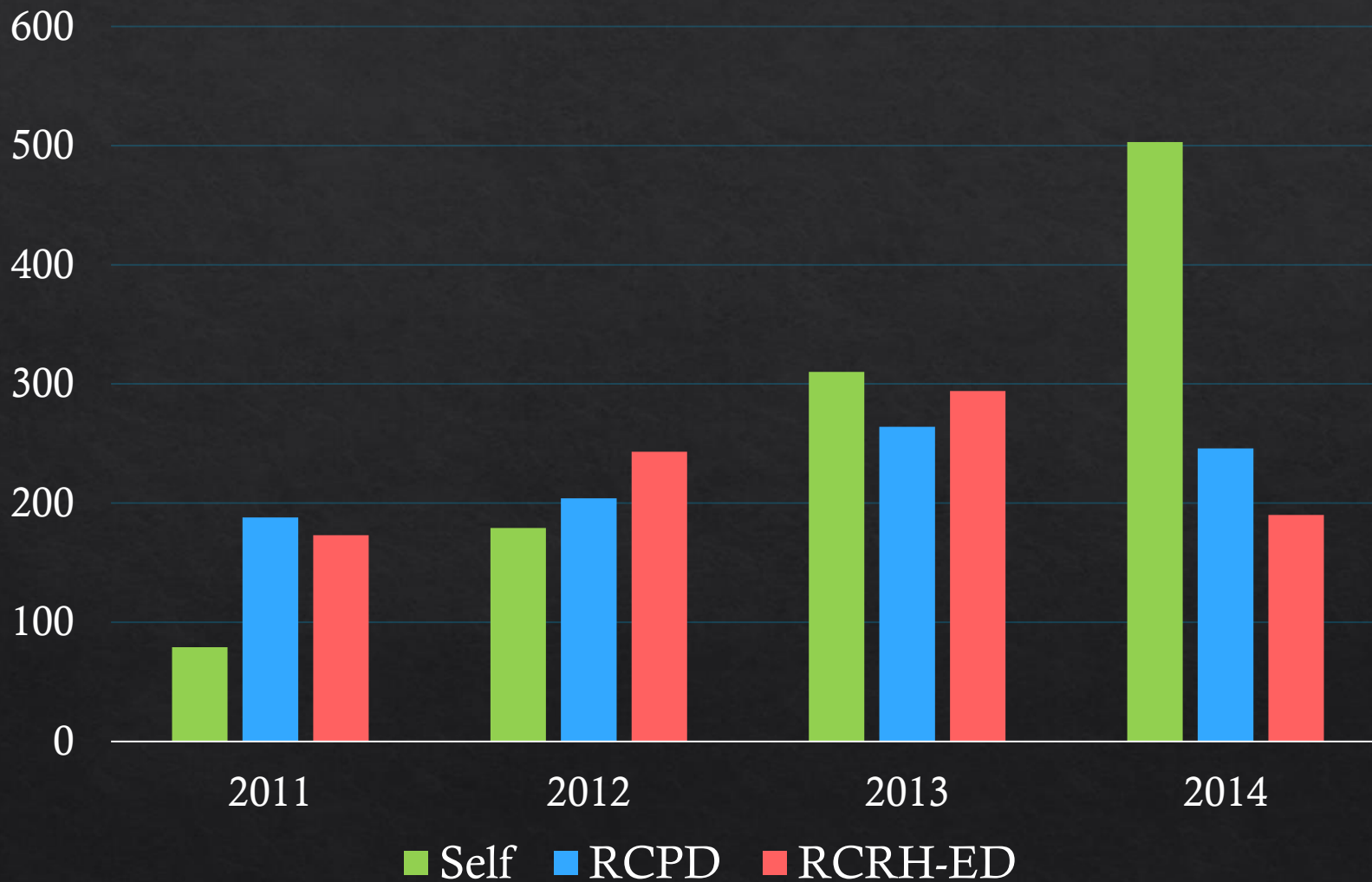
Admits by Month



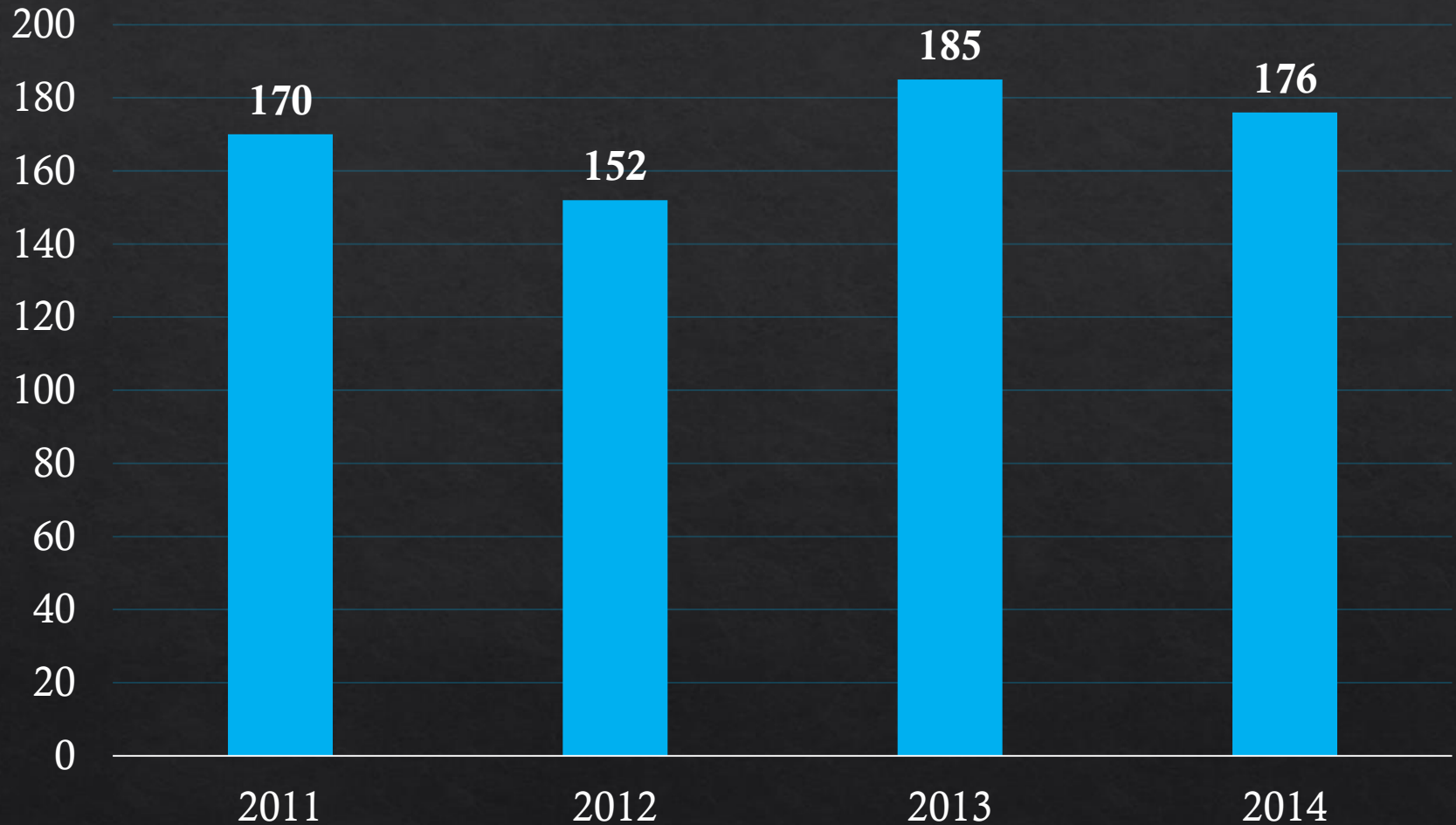
Average Length of Stay



Top 3 Referral Sources

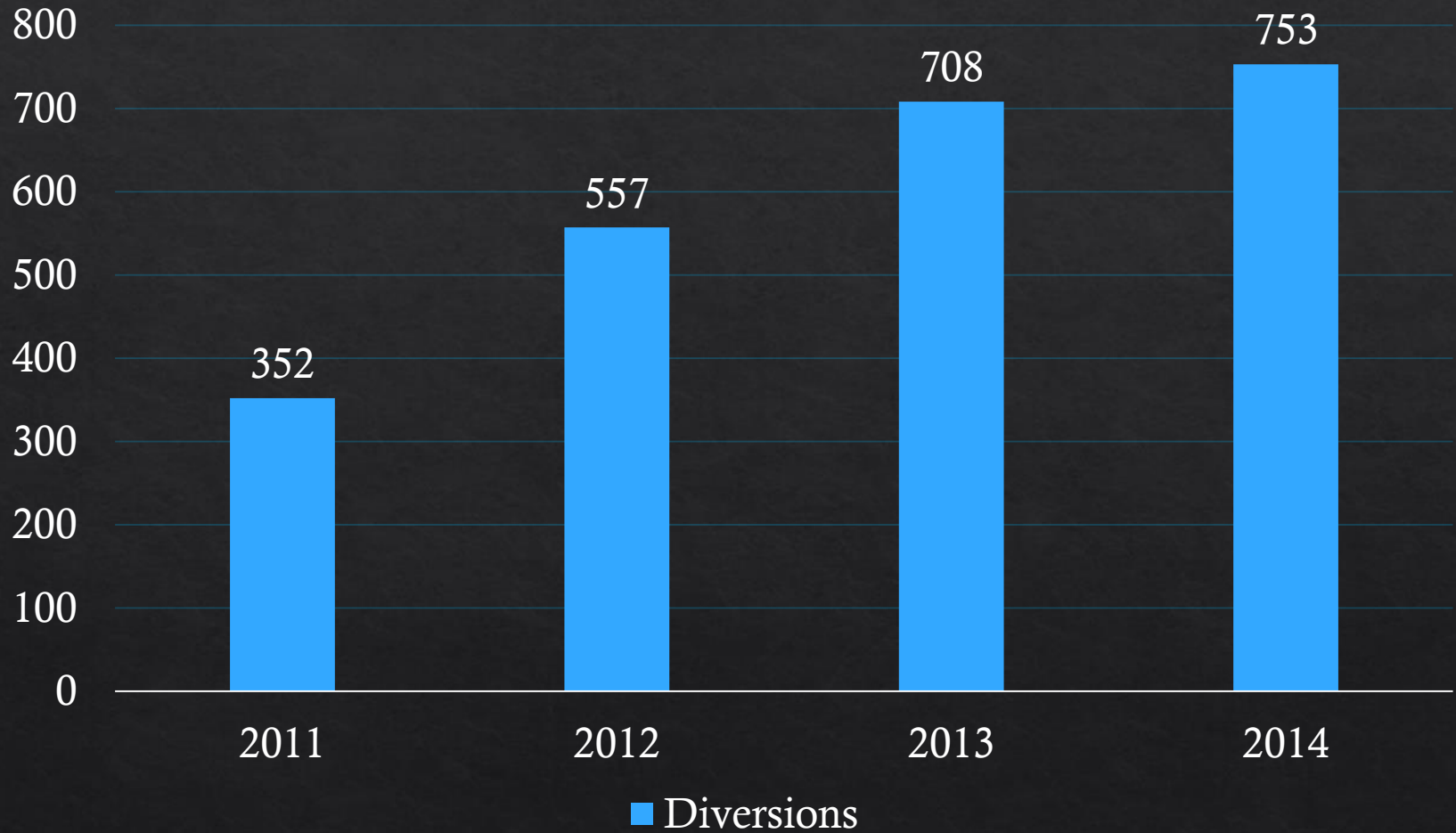


Referred/Consulted with CIT Officer

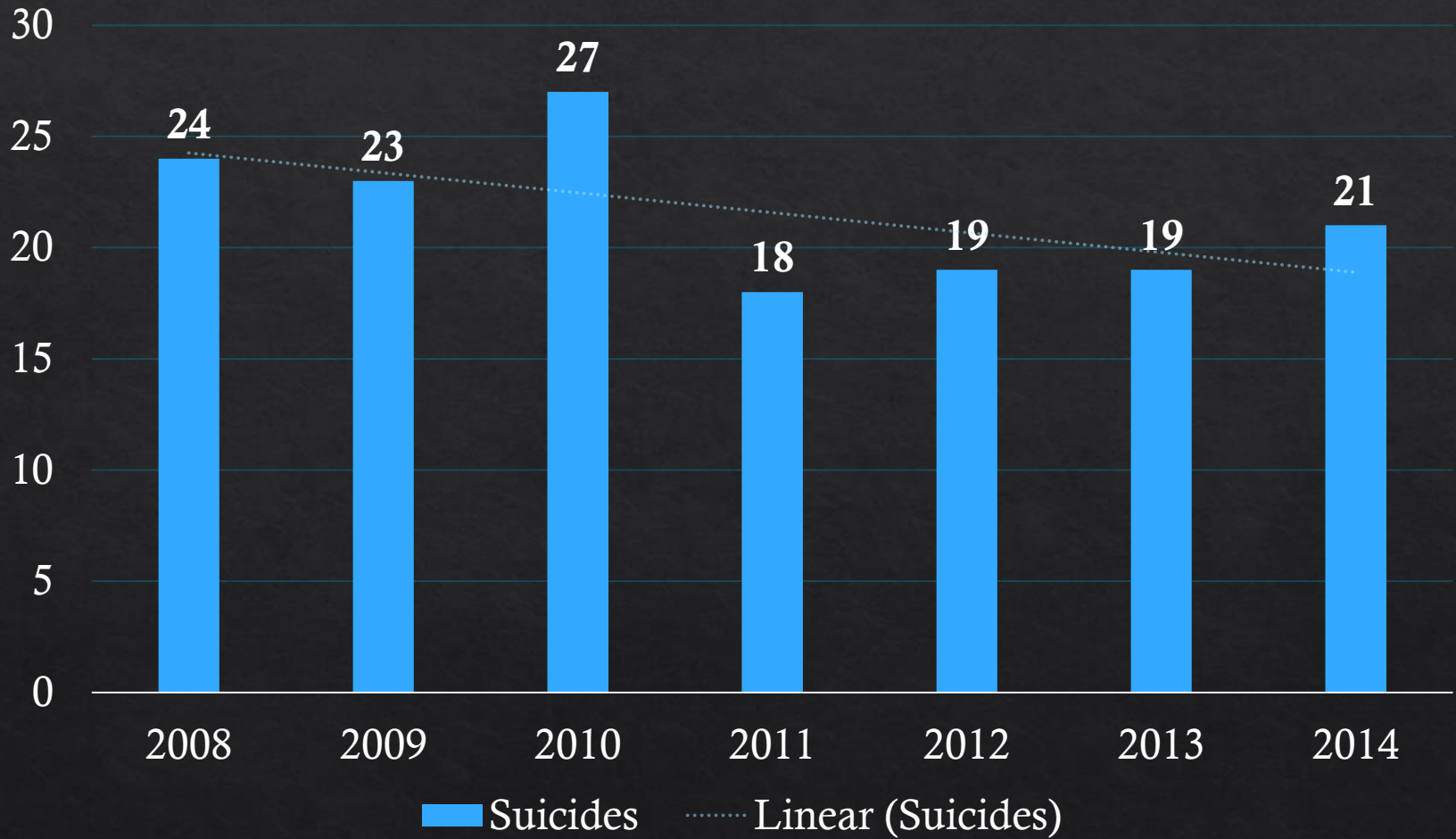


■ Referred/Consulted with CIT Officer

Diversions from Inpatient, Detox, or Jail



Pennington County Suicides



Q & A